

Stage & Rigging

Stage

D'anser Sprung Oak Dance Floor treated with Masonite and Roscoe marley dance flooring

Dimensions: 43'w x 64'd.

Rep. stage layout is as follows:

Rear Projection Screen (16'h x 24'w) (acting as cyc) sits 40' from the DS line.

Immediately DS of the RP is a full stage Blackout curtain on a traveler track.

A set of Legs (6'w) play 7' DS of the Traveler.

Note: These are the only legs in our Rep look.

We do not allow for mechanical connections into the deck.

Wenger Platforms are available for use:

<u>Platforms:</u>	5	3'x8'	<u>Leg Heights:</u>	24 @ 7"	6 @ 31"
	1	4'x8'		18 @ 15"	6 @ 39"
				24 @ 23"	6 @ 47"

Rigging

General: The lighting grid is dead hung from the high steel. There are steel I-beam columns on stage right every 25'6"(on center) – starting 8' downstage from the front edge of the stage.

All rigging must be approved by Technical Director.

- **Grid fixed height:** 23'6" – from stage floor to lighting grid.
- **Structural Beam height:** 33' – from stage floor to high steel.
- **Roof height:** 39'5" – from theatre floor to building ceiling.

Additional Inventory

Lekos	12 ETC S4 Bodies
	2 ETC S4 19° Barrels
	11 ETC S4 26° Barrels
	6 ETC S4 36° Barrels
	4 ETC S4 50° Barrels
	15 ETC S4-Jr 36°
	3 ETC S4-Jr 50°
	10 Colortran 30°
	5 Colortran 20°
Fresnels	3 Colortran 8" (2K)
Pars	3 ETC S4 Pars (w full lens kits)
	5 Par 64 (1K)
	4 MR-16 (Birdies)

Cable

18	5' (and under)	N/C
26	10'	White
8	15'	Yellow
23	25'	Red
15	50'	Blue
1	75' (and over)	Green

Insundry

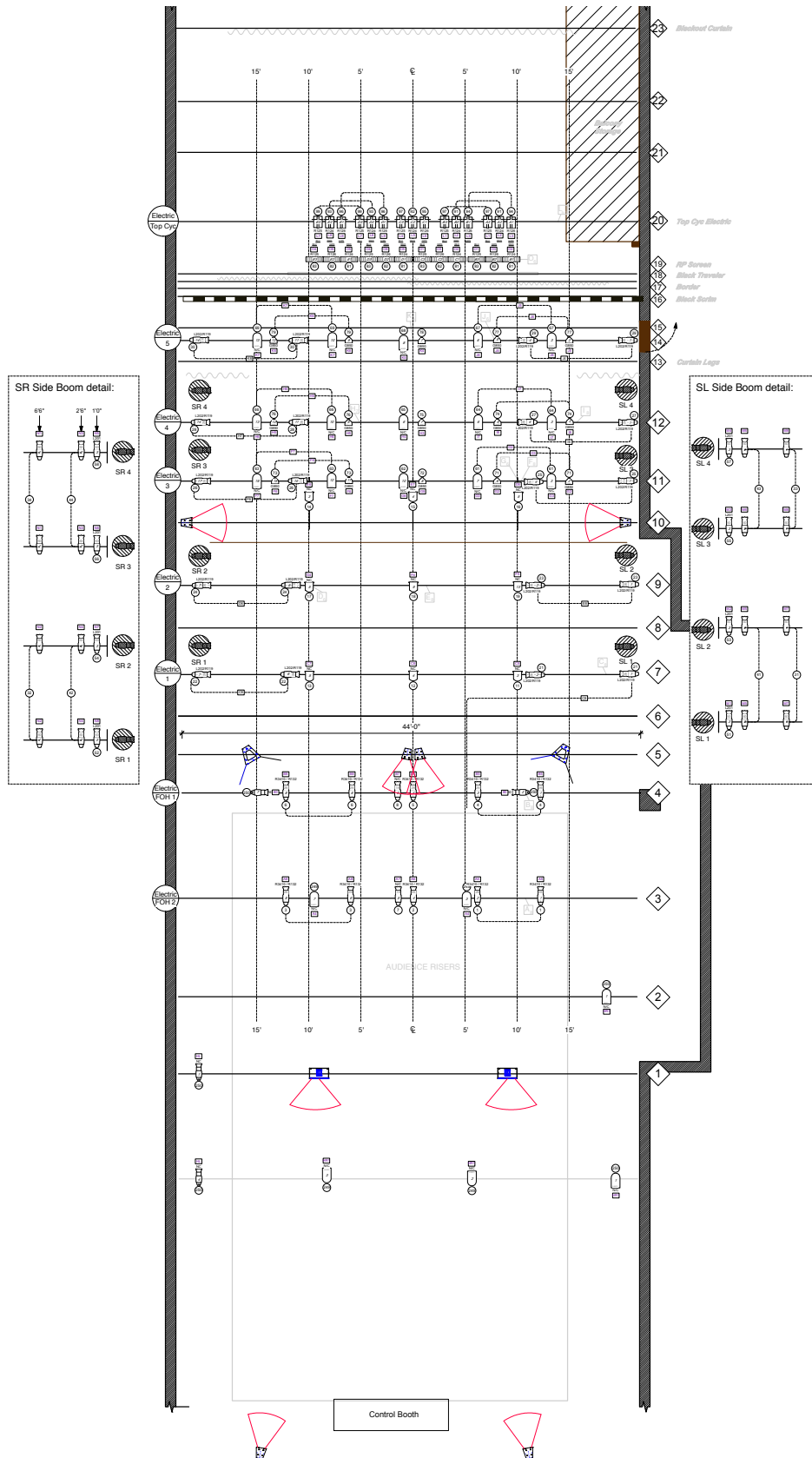
2 S-4 Iris
1 S-4 Jr Iris
10 S-4 Donuts
20 Stage Pin Two-fers
5 Female Ed. > Male Stage Pin Adapters
5 Male Ed. > Female Stage Pin Adapters

There are multiple PNG fan-out tails fixed to the lighting grid, which lead back to the Control Booth for patching. There are no pre-existing DMX runs in the space, and limited amounts of DMX cable are available.

Z SPACE

Ligh Plot

pdf version



Audio**Power**

120V 1 phase, 15, 20A circuits

Control Location

FOH position is located Back of the house, center (tech booth).

FOH snake is run to DSL, a possible monitor mix position, where an extra amp is located.

Hearing Assist System

None Available. Available auxiliary outputs

FOH Mixing Console

1 Yamaha LS9-32 Digital Mixer

FOH Main Speaker System

- 2 Meyer UPQ's - Stereo L/R
- 2 Meyer UPJ's - Center Fill
- 2 Meyer UPJ's - Upper House Delays
- 2 Meyer UPJ's - House Rear Surrounds

FOH Subwoofer

2 Meyer 500-HP's

Stage Monitors

2 Meyer UPJ's - Flown Stage Fills

Notes

When available 5 Meyer UP-4XP's can be used as front fill for the first 3 rows
or as monitors

Artaud is a very acoustic space. Sound levels shall not exceed 95 decibels during rehearsals or performance. Reinforced sound must be maintained to a minimum after 11:30pm and no amplified music is allowed before 12 noon on Saturday or Sunday.

All Inventory is Subject to Change. Z Space will endeavor to keep clients informed of changes in a timely manner.

Other Audio Equipment**Monitors**

2 JBL Eon Portable Powered Speakers (15")

Microphones

3 Crown PCC-160

4 Shure SM-58

2 Shure SM-57

Playback

1 Denon DN4500 Dual-Deck Professional CD player

1 Mac Mini running Qlab V2 software

Misc

2 Boom Stands w/ Clips

2 Straight Stands w/ Clips

1 16 Ch XLR Snake (100')

Approximately 300' of mic cabling

Assorted Adapters

Video

Eiki LC-X8 10,000 lumen video projector available with wide-angle 0.8 lens for Rear projections or 2.7 zoom lens for long front throw from back of the audience. Please note – there is an additional charge of \$350 per week for artists interested in using this projector.

There is a VGA cable run from the projector to the control booth.

Production Support

Tech Room

Workbench, limited tools & fasteners available, limited lighting color library available.
Limited Storage in tech storage room

Custodial Closet

Paint & Mop Sink-Located DSL

Clear-Com

1 single channel base station located in the control booth
4 belt packs and standard weight headsets

Access Equipment

1 A-Frame Ladder/working height 24'.
2 Genie lift/working height 30'.

Expendables

Z Space does NOT supply production expendables (gaff tape, tie line, gel, batteries, etc).
JCX Expendables @ 2413 Harrison Street (cross street at 20th st.) is within walking distance and can be reached at 415.824.4110.

Rentals

Audio - BBI Engineering: 415-695-9555
Lighting - Phoebus: 415.550.0770 or Holzmueller: 415.826-8383