

**VENUE**

**CAPACITY**

90 persons including staff & performers  
73 permanent seats 12 folding chairs can be added to front row

**CONTACT**

Z Space Directors of Production:  
Joe Moore [jmoore@zspace.org](mailto:jmoore@zspace.org),  
Colm McNally [cmnally@zspace.org](mailto:cmnally@zspace.org)

**LOADING**

**ALL LOAD-IN AND OUT MUST HAPPEN THROUGH THE FRONT DOOR OF THE THEATRE**  
There are stairs leading down to the theatre from the front door. Stair dimensions are as follows: Doorway: 6' 11" high, 5' 10" wide. Stairs are 3'8" wide between the handrails, which are 3' 8" tall. The minimum floor to ceiling clearance on the stairs is 7'1".  
**ALL SETS & MATERIALS MUST BE LOADED OUT - NO ONSITE DUMPSTERS**

**DRESSING ROOM**

10 person capacity located USL. Make-up lights, sink, refrigerator, and restroom  
Also includes ironing board, iron and steamer

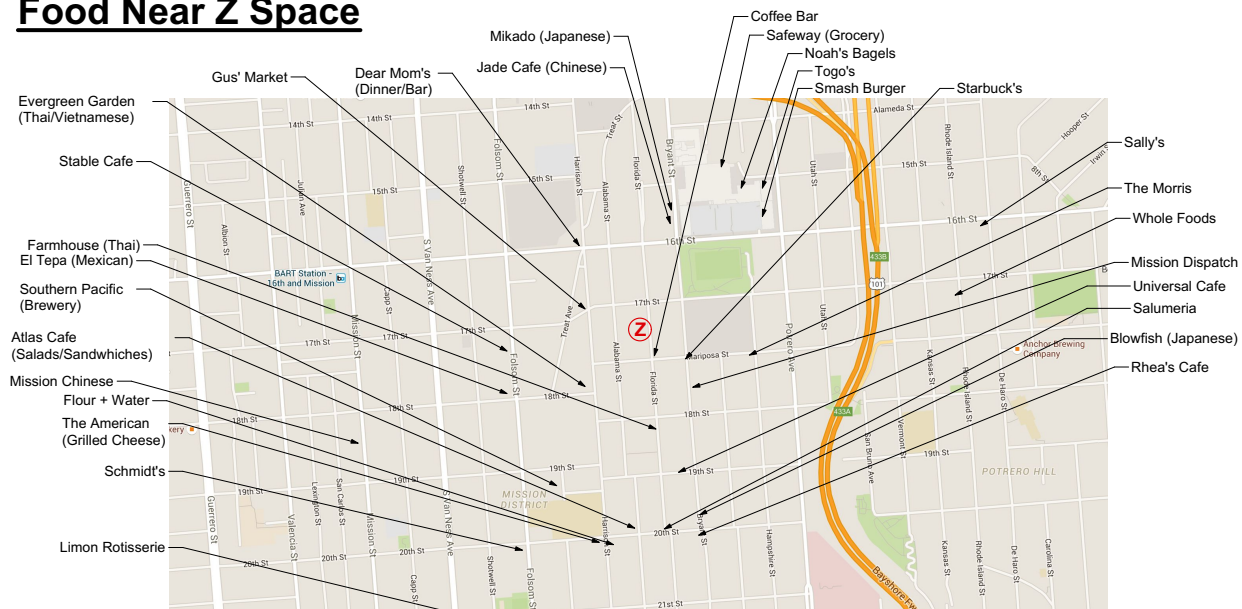
- \* dressing room has only only USL door, no lobby egress
- \*\* no laundry facilities on site

**SET ASSEMBLY**

Z Below is appropriate for final assemblage of sets. **NO CUTTING. TOUCH UP PAINTING ONLY, NO SPRAY PAINT**

\* Z Below features an ADA elevator from street level to lobby that is passenger-only, not for load-in or freight

**Food Near Z Space**



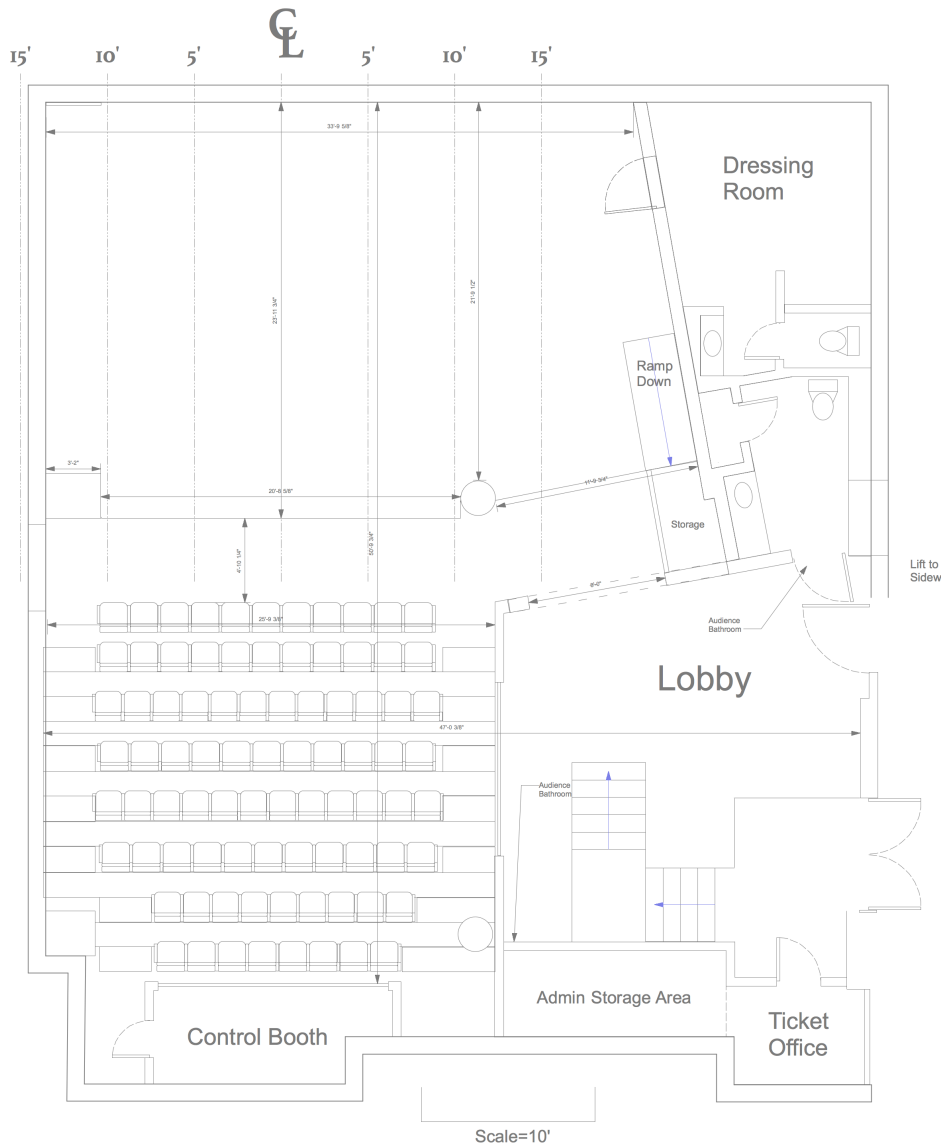
### STAGE LAYOUT

Stage deck is Masonite on plywood. Walls are sheet rock. A round 2' diameter structural column is at the DSL edge and a 3' square column plays flush to DSR edge

\* mechanical connections to the deck or walls are **not allowed**

### STAGE DIMENSIONS

- Stage Depth: 24'15" at Center
- Moat: 5'8.75"
- Stage Floor: 5.75" above moat floor
- Proscenium: 20'8" from pillar edge to column
- Ceiling Height: 13'2"
- Grid Height: 11'6"



**LIGHTING**

<b>CONTROL</b>	ETC Element 40/250	(EOS software version 2.6)
<b>STAGE DIMMING</b>	Strand CD-80 pack	96 circuits @ 1.2kW
	ETC Sensor rack	24 circuits @ 1.2kW

Console is operated from control booth. Tech tables are available for tech rehearsals. House lights are controlled from wall panel in booth, in house and in lobby

**CIRCUITS**

<i>multi</i>	<i># used of total</i>	<i>purpose</i>	<i>position</i>
A	7 of 8	FRONTS	FOH
B	6 of 8	SR SIDES	pipe J
C	9 of 15	MISC	US
D	3 of 6	SL SIDES	pipe D
E	4 of 8	TOPS	pipe E

Five 8-channel multis at fixed points in grid. Fan-outs of varying lengths. All circuits are hard patched at dimmer racks located in storage loft above dressing room

**LIGHTING INVENTORY**

<b>REP LIGHTING</b>	Ellipsoidal	7	ETC S4 Jr 50°	
		2	ETC S4 Jr 36°	
	PAR	8	Altman PAR56	
	LED PAR	6	Chroma-Q One 100X	w/barn doors
	Fresnel	6	Altman 6" (500w)	w/barn doors

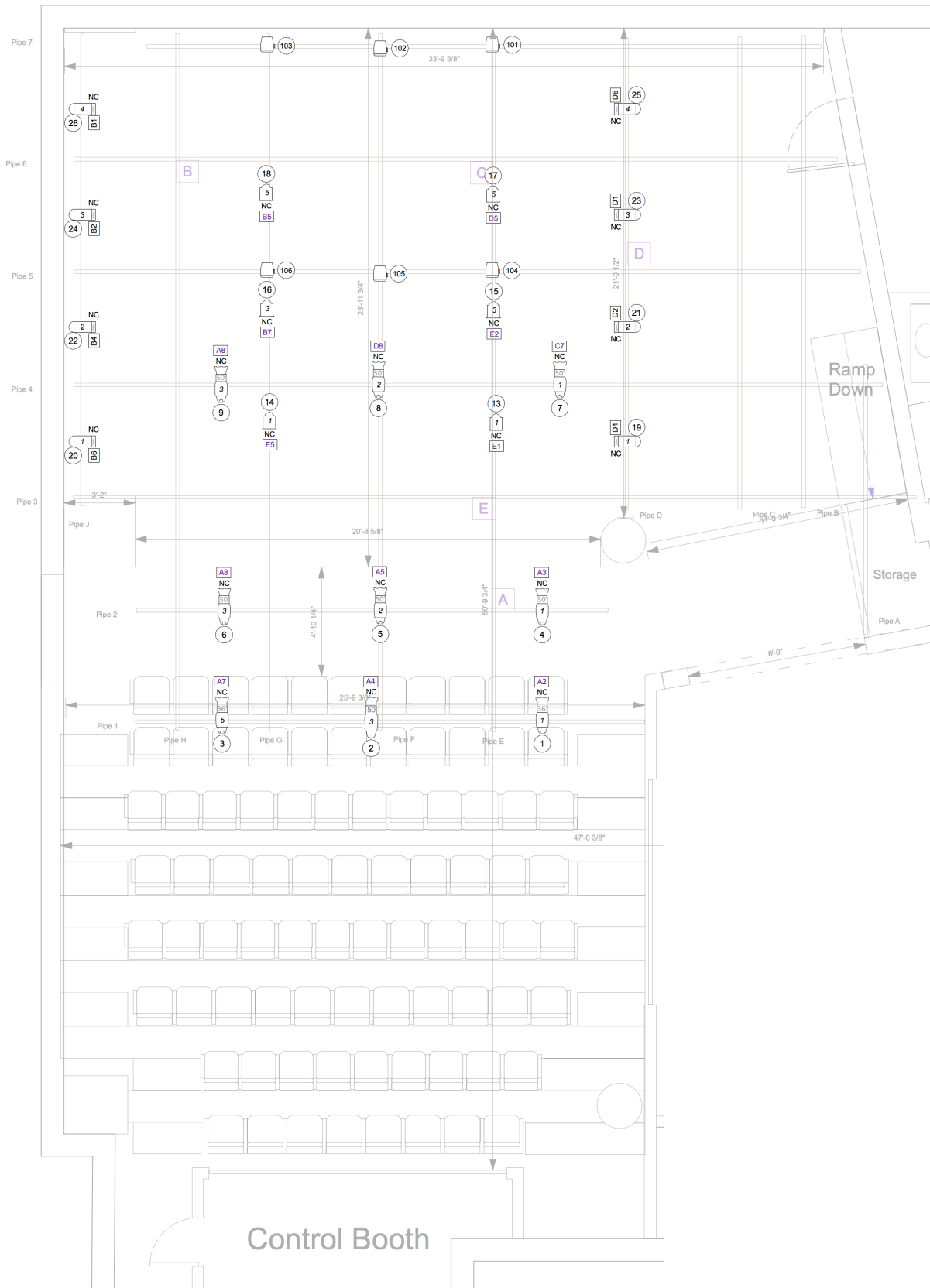
**SUPPLEMENTAL LIGHTING**

Mini-strip	3	Altman ZS-3 Zip Strip
Ellipsoidal	3	ETC S4 body
	3	50° barrel
	6	ETC S4 Jr 50°
	3	ETC S4 Jr 36°
PAR	3	ETC S4 PAR (MFL)
Fresnel	2	Colortran 8" (2K)

**MISC** limited inventory top hats, floor mounts, side arms, gobos, etc

**CABLE** 5' - 50' Stage Pin assorted  
supply of two-fers, MEs & Feds, edison extensions

LIGHTING PLOT



**AUDIO****POWER**

120V 1 Phase, 15, 20A circuits

**CONTROL**

Allen & Heath Qu-16 Digital Mixer  
 FOH position is in tech booth  
 12/4 Ch snake runs from booth to DSR in grid  
 iMac running QLab in booth

**HOUSE SPEAKERS**

FOH Stereo L/R	2 UPM1Ps	<i>powered</i>
Rear of House L/R	2 Meyer UPL2s	<i>"</i>
Subwoofer	Community CSX63	<i>located under risers, driven by a Crest Audio Pro7200 amp</i>

*\* Sound levels shall NOT exceed 95 decibels during rehearsals or performance. Reinforced sound is not allowed after 11pm and no amplified music is allowed before 12 noon on Saturday or Sunday*

**AUDIO INVENTORY****MICROPHONES**

2	Shure SM-58
1	Shure A2WS
2	Shure BG 4.0

**SPEAKERS**

2	JBL Control 1
2	Mackie SRM 350
1	Peavey Solo Amp
1	Peavy SP 115M

**AMPS**

1	ART SLA 2
1	Mackie FR series M1200

**MIXER**

Mackie 1402 VLZ

**PLAYBACK**

Focusrite Sapphire Pro14 Audio Interface

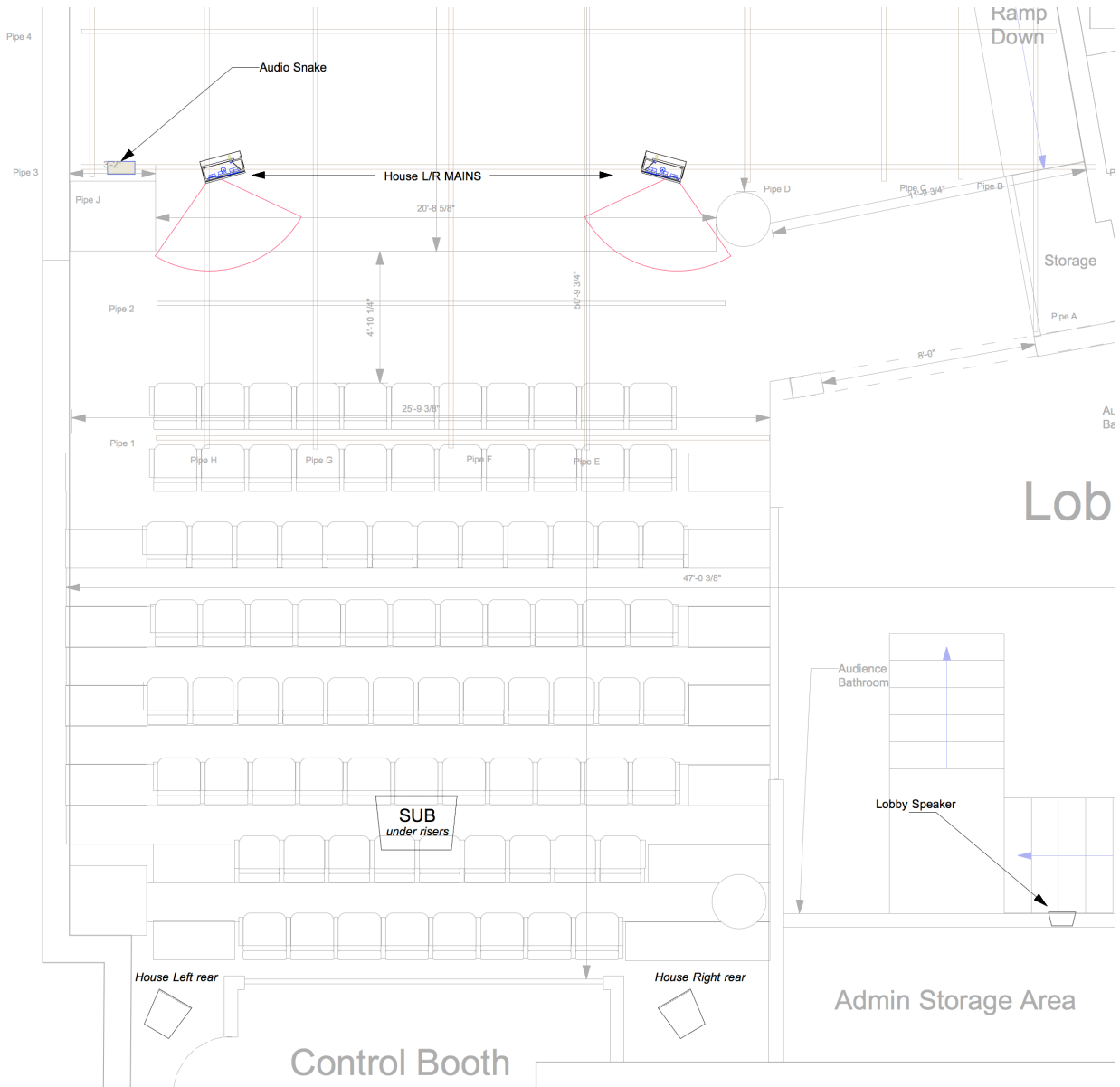
**MIC STANDS**

3	Articulated Stand
1	Straight Stand
1	Table stand

**CABLING**

Limited XLR (5'-25')

AUDIO PLOT



**VIDEO****PROJECTOR**

5k lumens Panasonic PT-VX510 video projector \$200/wk

*Rep position is center grid over first row FOH*

*\* there is no screen in rep configuration. ask to find out if a screen is available or provide your own*

**MISC PRODUCTION SUPPORT**

**TECH ROOM** Cable cart, limited tools & fasteners. Limited storage

**CLEAR-COM**

1	Wired base station in control booth
1	Wired belt pack
2	Standard headsets

**ACCESS EQUIPMENT**

1	12' A-frame ladder
1	8' A-Frame ladder

**EXPENDABLES**

Z Space does not supply production expendables (gaff tape, tie line, batteries, etc). JCX Expendables is within walking distance and can be reached at 415.824.4110

**RENTALS**

**AUDIO** BBI Engineering: 415-695-9555  
JK Sound: 415-826-6864  
VER: 650-837-9480 (also has lots of video equipment)

**LIGHTING** DTC: 510.595.3456  
Holzmueller: 415.826-8383

**VIDEO & STAGING**

Oaktown Productions: 510.385.5662  
McCune: 650.873.1111  
Island Creative: 415.834.0641 (also has lots of lighting equipment)

**CATERERS** Events, etc <http://www.eventsetc.com/home>